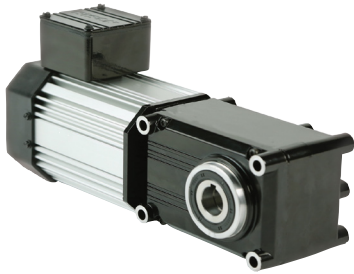


## Maximum Efficiency Right-angle Gearmotors

### 720 115/230V Single Phase Dual Voltage/Dual Frequency



PowerSTAR® 720 Series 115/230V dual voltage/dual frequency single phase right-angle gearmotor offers up to 470 in-lbs of torque running continuously in a sleek, compact profile.

#### 720 Series 115/230V 1PH Dual Voltage/Dual Frequency - TEFC

Part Number	Rated Speed		Rated Torque		Input HP	Gear Ratio	OHL (lbs)	Rated Current 115V (Amps)		Rated Current 230V (Amps)	
	50Hz	60Hz	50Hz	60Hz				50Hz	60Hz	50Hz	60Hz
026-720E0010	140	168	37	35	1/8	10	270	1.75	1.99	0.95	1.10
026-720E0015	93	112	55.4	55	1/8	15	305	1.75	1.99	0.95	1.10
026-720E0020	70	84	74	73	1/8	20	330	1.75	1.99	0.95	1.10
026-720E0030	47	56	111	105	1/8	30	370	1.75	1.99	0.95	1.10
026-720E0040	35	42	148	145	1/8	40	400	1.75	1.99	0.95	1.10
026-720E0050	28	34	185	180	1/8	50	430	1.75	1.99	0.95	1.10
026-720E0060	23	28	222	220	1/8	60	455	1.75	1.99	0.95	1.10
026-720E0080	18	21	296	295	1/8	80	490	1.75	1.99	0.95	1.10
026-720E0100	14	17	370	365	1/8	100	525	1.75	1.99	0.95	1.10
026-720E0120	12	14	444	440	1/8	120	550	1.75	1.99	0.95	1.10
026-720E0150	9.2	11	295	295	1/15	150	635	0.91	1.30	0.51	0.69
026-720E0180	7.8	9.3	355	355	1/15	180	670	0.91	1.30	0.51	0.69
026-720E0240	5.8	7.0	470	470	1/15	240	725	0.91	1.30	0.51	0.69

\*Capacitors required - offered separately. See accessories on page 17

